



## Ron Smith & Associates, Inc.

[www.RonSmithandAssociates.com](http://www.RonSmithandAssociates.com)

---

### PLEASE NOTE:

- **THIS DOCUMENT IS FOR TEST DEMONSTRATION PURPOSES ONLY.**
- **THIS DOCUMENT HAS BEEN COMPRESSED FOR EASY WEB DOWNLOAD.**
- **IMAGES CONTAINED IN THIS DOCUMENT ARE NOT COMPARISON QUALITY IMAGES AND DO NOT ACURATLEY REPRESENT RS&A PRODUCTION TEST IMAGES.**
- **REPORTS AND REPORT DATA CONTAINED IN THIS DOCUMENT ARE FOR SAMPLE PURPOSES ONLY.**

### RS&A FOOTWEAR COMPARISON PROFICIENCY TEST

- We offer Footwear Comparison Proficiency Tests twice per year, Spring and Fall.
- Each test cost \$325-\$375, depending on the media type option chosen.
  - RS&A offers deep discounts on multi-year commitment and test quantities of 5 or more. Call us today and get your custom quote pricing.
- Each test typically contains at least 6 question impressions and 4 known impressions. Also, acetate overlays are provided as well.
- Important cycle dates can be found online.

### IN THIS DOCUMENT YOU WILL FIND

- Instruction sheet.
- Sample test images.
- Manufacturer report.
- Individual report.
- Advanced summary report.

For additional information, questions, or to order RS&A Proficiency Tests contact:

Lucas Hatcher, Sales and Marketing Director  
Phone: 1-866-832-6772 or Email: [testing@ronsmithandassociates.com](mailto:testing@ronsmithandassociates.com)

You can visit us online at:

**[www.RonSmithandAssociates.com](http://www.RonSmithandAssociates.com)**



## Ron Smith & Associates, Inc.

### Testing Division

[www.RonSmithandAssociates.com](http://www.RonSmithandAssociates.com) | [testing@ronsmithandassociates.com](mailto:testing@ronsmithandassociates.com)

---

### Instructions for Footwear Comparison Proficiency Test

Test #XXXXX

Submission Due Date: MM/DD/YYYY

#### Scenario:

A burglary occurred overnight at a local army surplus dealer. The subjects appeared to have gained entry through a broken window that opens into the manager's office, in the back of the store. Inside the office were several pieces of broken glass and a few papers scattered on the tile floor. Several impressions were developed on the broken glass, the papers on the floor, and the tile floor in the manager's office. The impressions developed on the paper were on overlapping pieces of paper. Later that day two suspects were detained and their shoes were collected for examination with any footwear impressions developed in the store. Investigators have submitted the following items for footwear examinations:

- Q-1 Questioned impression developed on a piece of broken glass below the point of entry.
  - Q-2 Questioned impression developed on a piece of broken glass below the point of entry.
  - Q-3 Questioned impression developed on the floor inside the office.
  - Q-4 Questioned impression developed on the floor inside the office.
  - Q-5 Questioned impression developed on the floor inside the office.
  - Q-6 Questioned impression developed on a piece of paper on the floor inside the manager's office.
  - Q-7 Questioned impression developed on a piece of paper on the floor inside the manager's office.
- 
- K-1 Known photograph of the "McRae" size US 10N, right shoe belonging to suspect A.
  - K-2 Known photograph of the "McRae" size US 10N, left shoe belonging to suspect A.
  - K-3 Known photograph of the "McRae" size US 10N, right shoe belonging to suspect B.
  - K-4 Known photograph of the "McRae" size US 10N, left shoe belonging to suspect B.

All shoes in K-1 through K-4 have had known standards and acetate overlays created and are marked with their corresponding K-#.



## **Instructions:**

Compare the submitted questioned impressions with the known shoes of the suspects provided in K-1 through K-4. The items in this test should be treated in the same manner as items typically received within your laboratory. A hard copy worksheet has been provided for the examiner's convenience. Once the test has been completed in its entirety, the results must be entered into the web portal for electronic submission.

Note: If you purchased the digital version of this test, please be aware that it may take a few minutes for the images to load due to the large file sizes associated with high resolution images. To expedite this process, we suggest that you copy the digital files to your computer and open them directly from your computer's hard drive rather than from the DVD.

Prior to distribution of this test, all of the expected responses were determined, by internal and external consensus, to be either "Identification" or "Exclusion"; however, we are aware that some agencies allow for a conclusion of "Inconclusive" in their casework. In designing this Proficiency Test, there was no intention to force a participant to render a conclusion which goes beyond their considered opinion. To satisfy this option, participants are allowed to enter "Inconclusive" as a response. Due to the fact that a participant's "Inconclusive" response does not meet the assigned values, it will appear as an inconsistent response in the individual participant report as well as in the summary report and be incorporated as such in the statistical analysis. It will be up to each agency to decide if the participant's "Inconclusive" response qualifies as being acceptable under their policies and procedures. **Please note that leaving the "Conclusion" column blank for any of the latent prints will cause the results submission form to be rejected.**

For each questioned impression that is identified, enter "Identification" in the "Conclusion" column for that Q#, followed by the appropriate K# for the known shoe being identified and then whether it was the left or right shoe. If all of the provided known shoes are excluded as the source of the questioned impression, enter "Exclusion" in the "Conclusion" column for that Q#.

After all examinations are completed, the results must be submitted via the RS&A Web Portal at <http://www.ronsmithandassociates.com/proficiency>. Click "Results Entry Portals" on the left side of the page and then select "Footwear". You will be directed to log in by using the test code provided at the top of this document and the password that has been supplied to your agency. Prior to entering your results, you will be required to answer a few general demographic survey questions. Your responses and test results will be used to generate the summary report at the completion of this testing cycle. The RS&A Web Portal will save your responses as you enter them, allow you to work at your own pace, and if needed, complete your submission at a later time. **Both the Demographic Survey and the Results Entry Form must be completed in their entirety in order for RS&A to accept the test results.** There is an area for comments on the results form which will be published in the summary report. Comments are not required and are not considered as results, but are very much appreciated. If you are unable to submit your results via the RS&A Web Portal, please contact our Testing Division for alternate submission instructions.

In order for your results to be included in the final summary report for this test, responses must be received no later than **MM/DD/YYYY**.

For any questions or inquiries concerning this test, please contact the Proficiency Testing Coordinator, Jon Byrd at 866-832-6772 or [testing@ronsmithandassociates.com](mailto:testing@ronsmithandassociates.com).



**Footwear Comparison Proficiency Test #XXXXX**  
**Demographic Survey**

1. If your agency is ISO/IEC accredited, to which standard(s) are they accredited?

- 17020     17025     Not Accredited

2. Is the individual assigned to this test civilian or sworn?

- Civilian     Sworn

3. Is the individual assigned to this test I.A.I. Certified in Footwear?

- Yes     No

4. What is the primary job position of the individual assigned to this test?

- Latent Print Examiner     Footwear Examiner     Questioned Document Examiner  
 Crime Scene Investigator     Firearms/Toolmark Examiner     Other (specify): \_\_\_\_\_

5. Approximately, what percentage of the above referenced individual's time is devoted to the examination and comparison of footwear evidence?

- Less than 25%     25% to 50%     51% to 75%     76% to 100%

6. Approximately, how many hours of formal footwear examination training has the above referenced individual completed?

- Less than 40 Hours     40-80 Hours     81-200 Hours  
 201-400 Hours     401-1000 Hours     1001+ Hours

7. How long has the above referenced individual been conducting footwear examinations?

- Less than 1 Year     1-3 Years     4-6 Years  
 7-10 Years     11-20 Years     21+ Years

8. What is the highest level of education that the above referenced individual has completed?

- High School     Associate's Degree     Bachelor's Degree  
 Master's Degree     PhD

9. Did your agency have the original participant's conclusions reviewed by another examiner(s)?

- Yes     No



**Consent to Release Results to Accrediting Bodies**

**Footwear Comparison Proficiency Test #XXXXXX**

If your agency is accredited and would like for Ron Smith and Associates, Inc. to submit proficiency test data to your designated accrediting body, complete the form below. Results will not be submitted to an accrediting body unless the completed form is returned to RS&A by the results submission deadline of MM/DD/YYYY.

For this requirement, please submit the following information through the RS&A Web Portal. If for any reason you are unable to utilize the portal, please contact a member of our Testing Division at 1-866-832-6772 for alternate submission instructions.

By completing and submitting the applicable information below, you hereby **authorize** Ron Smith and Associates, Inc. to release the results of the above test to the appropriate accrediting body.

ANAB \_\_\_\_\_ ASCLD/LAB \_\_\_\_\_ A2LA \_\_\_\_\_ OTHER (Define) \_\_\_\_\_

Certificate Number: \_\_\_\_\_

Laboratory Name: \_\_\_\_\_

Location (City/State): \_\_\_\_\_

Printed Name: \_\_\_\_\_ Title: \_\_\_\_\_

Signature: \_\_\_\_\_ Date: \_\_\_\_\_

PT SAMPLE



**Example Results Form**

<b>Questioned Impressions Q-#</b>	<b>Conclusion</b> Enter "Identification", "Exclusion", or "Inconclusive"	<b>Known Shoe K-#</b>
Q-1	Identification	K-1
Q-2	Identification	K-2
Q-3	Exclusion	
Q-4	Inconclusive*	

\*If any of the questioned impressions are marked as "Inconclusive", please document the reason for the decision in the "Comments" section of the answer sheet.

RS&A  
PT SAMPLE



**Footwear Comparison Proficiency Test #XXXXX**  
**Results Entry Form**

<b>Questioned Impressions Q-#</b>	<b>Conclusion</b> Enter "Identification", "Exclusion", or "Inconclusive"	<b>Known Shoe K-#</b>
Q-1		
Q-2		
Q-3		
Q-4		
Q-5		
Q-6		
Q-7		

\*If any of the questioned impressions are marked as "Inconclusive", please document the reason for the decision in the "Comments" section below.

Comments: \_\_\_\_\_

\_\_\_\_\_

\_\_\_\_\_

\_\_\_\_\_

\_\_\_\_\_

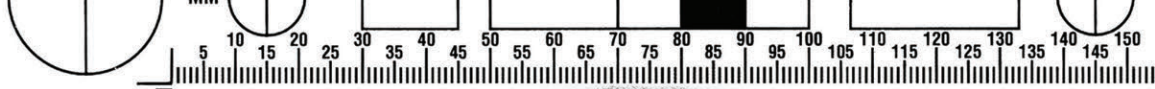
\_\_\_\_\_

\_\_\_\_\_

\_\_\_\_\_

\_\_\_\_\_



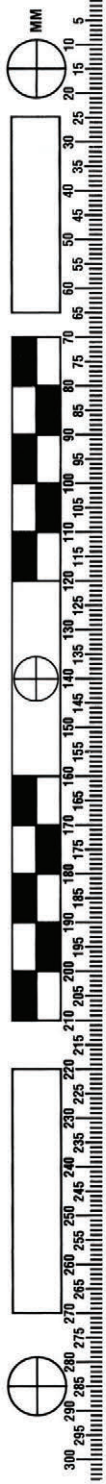
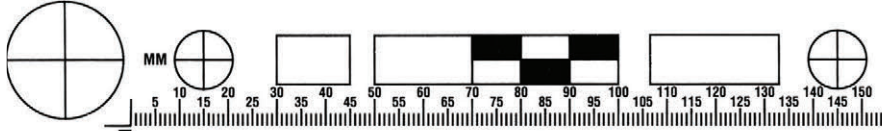


RS&A SAMPLE

K-2  
Left Shoe  
Known Impression



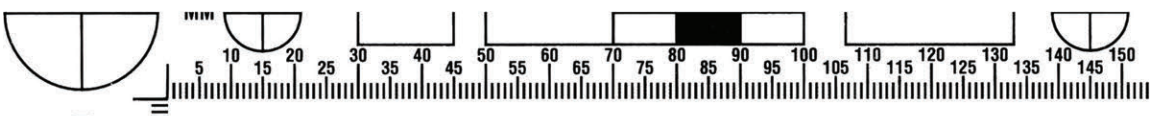




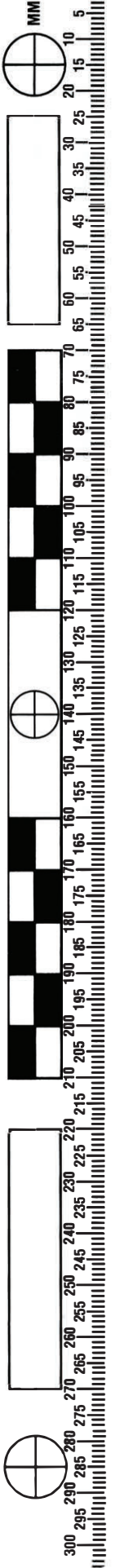
K-2  
Left Shoe  
Known Impression



RS&A SAMPLE



Direction of light source indicated by arrows

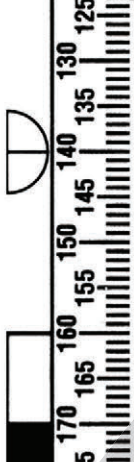
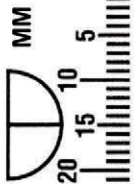
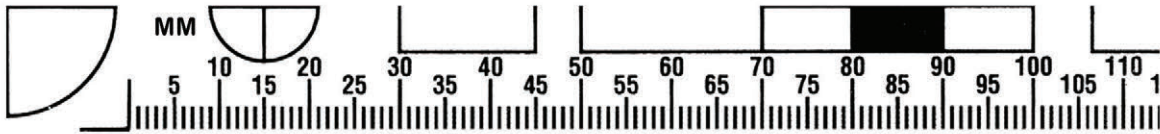


K-2  
Left Shoe

\*Position Reversed for Comparison







**Q-2**  
**LIFT FROM**  
**BROKEN GLASS**





## Ron Smith & Associates, Inc.

### Testing Division

[www.RonSmithandAssociates.com](http://www.RonSmithandAssociates.com) | [testing@ronsmithandassociates.com](mailto:testing@ronsmithandassociates.com)

---

### Test Manufacturer's Information

#### Footwear Comparison Proficiency Test #XXXXX

This test consisted of seven questioned impressions and two sets of known shoe prints. The assigned values are as follows:

Questioned Impressions Q-#	Conclusion	Known Shoe K-#
Q-1	Identification	K-4
Q-2	Identification	K-3
Q-3	Exclusion	N/A
Q-4	Exclusion	N/A
Q-5	Exclusion	N/A
Q-6	Identification	K-2
Q-7	Identification	K-2

The assigned values were determined through the ground truth information and verified through unanimous agreement during pre-distribution testing.

Individual reports will be provided to participants on or before mid-MM/YYYY. The final summary report for this test will be posted on the Ron Smith and Associates website at <http://www.ronsmithandassociates.com/proficiency/footwear.html> by late MM/YYYYY.

For questions or further information, contact our Footwear Print Proficiency Test Coordinator by emailing [testing@ronsmithandassociates.com](mailto:testing@ronsmithandassociates.com) or by calling toll free at 1-866-832-6772.

**Authorized by:** Ron Smith  
President



**Ron Smith & Associates, Inc.**  
**Testing Division**

[www.RonSmithandAssociates.com](http://www.RonSmithandAssociates.com) | [testing@ronsmithandassociates.com](mailto:testing@ronsmithandassociates.com)

---

**Individual Participant Report - Test Code: XXXXXXXX**

**Footwear Comparison Proficiency Test #XXXXXX**

This proficiency test consisted of seven questioned footwear impressions and two known shoe impressions and was provided in either a hard copy and/or digital copy format. Listed below are the responses submitted from the participant assigned to this test code as well as the assigned values for each of the questioned footwear impressions. The assigned values were generated from our ground truth information and pre-distribution testing.

<b>Questioned Impressions Q-#</b>	<b>Participant's Response</b>	<b>Assigned Value</b>
Q-1	Identification K-4	Identification K-4
Q-2	Identification K-3	Identification K-3
Q-3	Exclusion	Exclusion
Q-4	Exclusion	Exclusion
Q-5	Exclusion	Exclusion
Q-6	Identification K-2	Identification K-2
Q-7	Identification K-2	Identification K-2



Prior to the distribution of this test, the expected responses were determined to be either "Identification" or "Exclusion"; however, we are aware that some agencies allow for a conclusion of "Inconclusive" in their casework. In designing this proficiency test, there was no intention to force a participant to render a conclusion which goes beyond their considered opinion. To satisfy this option, participants were allowed to enter "Inconclusive" as a response. Due to the fact that a participant's "Inconclusive" response does not meet the assigned values, it will appear as an inconsistent response in the individual report and be incorporated as such in the summary report statistics. It will be up to each agency to decide if the participant's "Inconclusive" response qualifies as being acceptable under their policies and procedures.

Additional information about this test and the statistics obtained from all individuals that participated in this proficiency testing cycle will be provided in the summary report and will be available on our website late MM/YYYY.

If your responses are inconsistent with the assigned values, RS&A provides its participants with a process to file an appeal. To initiate an appeal, please submit the required information in writing using the form located at <http://www.ronsmithandassociates.com/proficiency/appealsform.html>.

RS&A maintains the confidentiality of all clients. All results are published using randomly generated test codes and passwords. We will not release the identity of any participant without the written consent of the participant.

For questions or further information, contact our Footwear Proficiency Test Coordinator by emailing [testing@ronsmithandassociates.com](mailto:testing@ronsmithandassociates.com) or by calling toll free at 1-866-832-6772.

**Authorized by:** Ron Smith, President  
Ron Smith and Associates, Inc.

**Date of Issue:**



## Ron Smith & Associates, Inc.

### Testing Division

[www.RonSmithandAssociates.com](http://www.RonSmithandAssociates.com) | [testing@ronsmithandassociates.com](mailto:testing@ronsmithandassociates.com)

---

### Summary Report

Footwear Comparison Proficiency Test #XXXXX

Issued: MM/DD/YYYY

On MM/DD/YYYY, Ron Smith and Associates, Inc. (RS&A) shipped the Footwear Comparison Proficiency Test #XXXXX. Participants were required to submit their responses no later than MM/DD/YYYY in order for them to be included in this summary report.

A total of XX tests were ordered and shipped, with all XX participants returning their responses. The test was provided in both digital and hard copy format and included seven questioned impressions and four known footwear impressions.

The results presented in this report reflect whether or not the participants' submitted results agree or disagree with the assigned values garnered from pre-distribution testing and outlined in **The Manufacturer's Report** (Appendix 1). The primary purpose of a Summary Report is to provide an overall documentation of all the submitted responses. It is RS&A's intention to go a step further by providing more meaningful statistical results through analyzing the submitted responses in relation to the demographics obtained from each of the examiners participating in this proficiency test. All results and statistics for Test #XXXXX will be outlined through graphs and charts found in the remainder of this report.

Prior to distribution of this test, all of the expected responses were determined to be either "Identification" or "Exclusion"; however, we are aware that some agencies allow for a conclusion of "Inconclusive" in their casework. In designing this Proficiency Test, there was no intention to force a participant to render a conclusion which goes beyond their considered opinion. To satisfy this option, participants were allowed to enter "Inconclusive" as a response. Due to the fact that a participant's "Inconclusive" response does not meet the assigned values, it will appear as an inconsistent response in the summary report and be incorporated as such in the statistical analysis. It will be up to each agency to decide if the participant's "Inconclusive" response qualifies as being acceptable under their policies and procedures.

RS&A strives to maintain the confidentiality of all of its clients and participants. All results are obtained and published using randomly generated test codes. RS&A will not release the identity of any participant without the written consent of the participant and/or the agency involved.

For any additional information, please contact Footwear Proficiency Testing Coordinator, at [testing@ronsmithandassociates.com](mailto:testing@ronsmithandassociates.com) or call toll free at 1-866-832-6772.

# Appendix 1

## Test Manufacturer's Information

### Footwear Comparison Proficiency Test #XXXXX

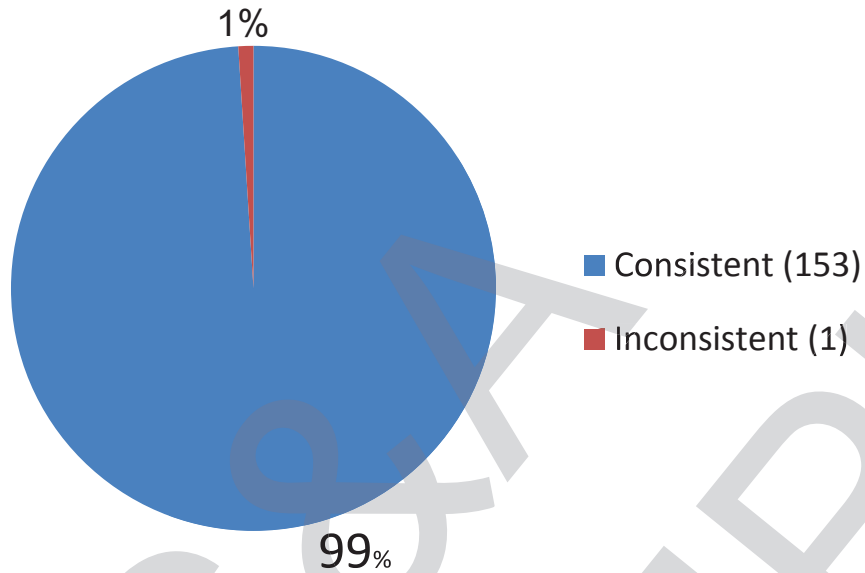
The assigned values are:

Questioned Impressions Q#	Conclusion	Known Shoe K-#
Q-1	Identification	K-4, Left Shoe
Q-2	Identification	K-3, Right Shoe
Q-3	Exclusion	
Q-4	Exclusion	
Q-5	Exclusion	
Q-6	Identification	K-2, Left Shoe
Q-7	Identification	K-2, Left Shoe

The test consisted of seven questioned impressions and four known footwear impressions in hard copy photograph and/or digital image formats. The assigned values were determined through the ground truth information and verified through unanimous agreement during pre-distribution testing.

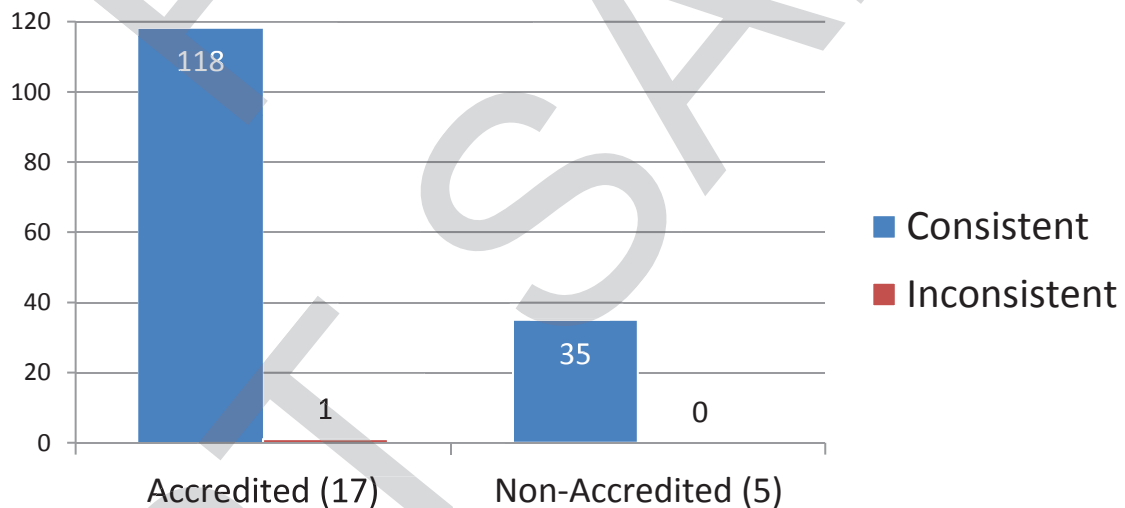
## Appendix 2

### Consistent vs Inconsistent Responses Compared to Assigned Values



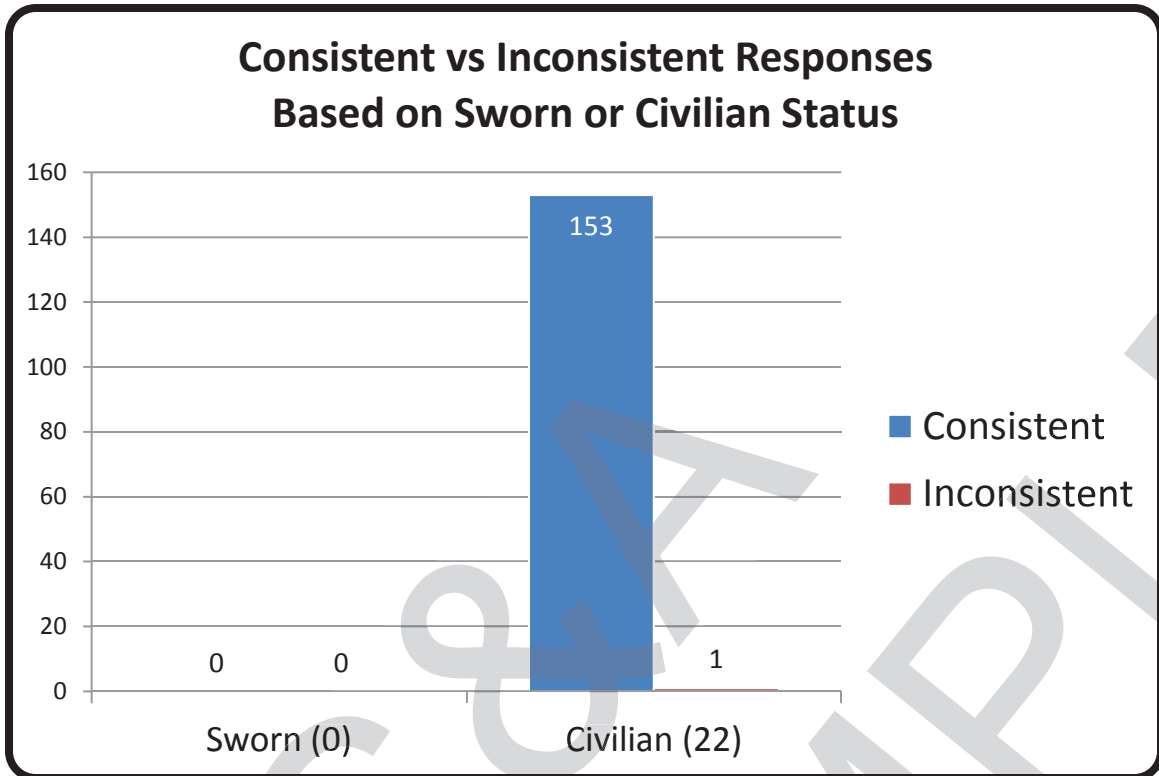
## Appendix 3

### Consistent vs Inconsistent Responses Based on Accreditation

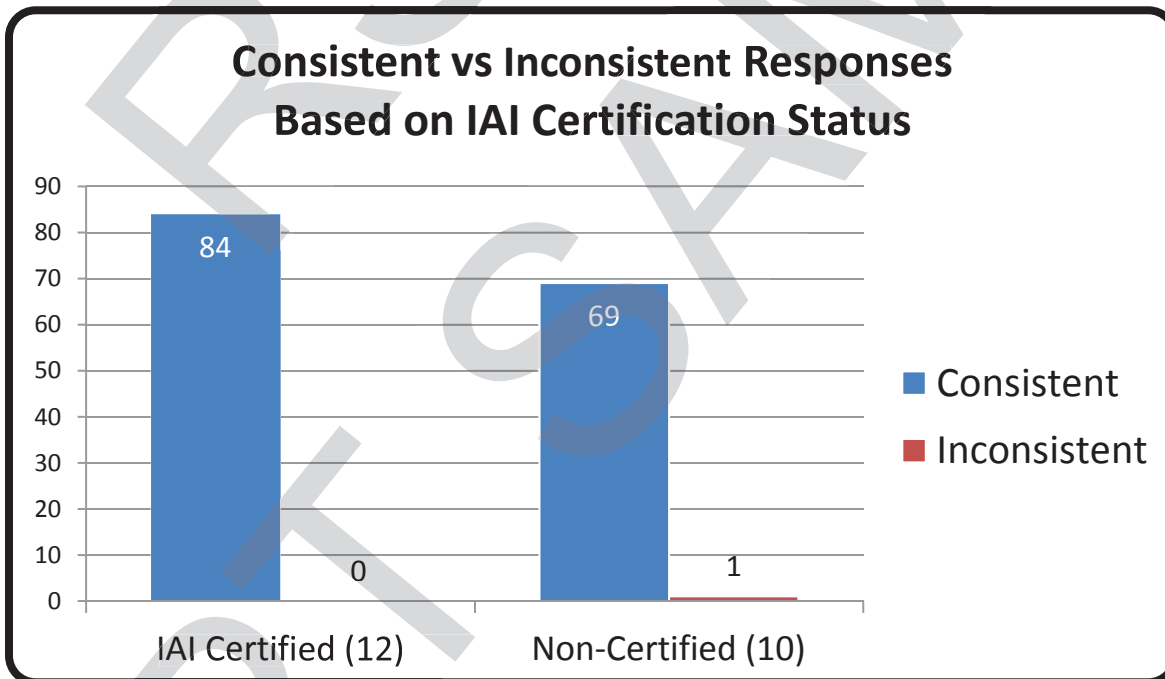


\*For further information, please read *Manufacturer's Additional Observations* on the final page of this report.

## Appendix 4



## Appendix 5

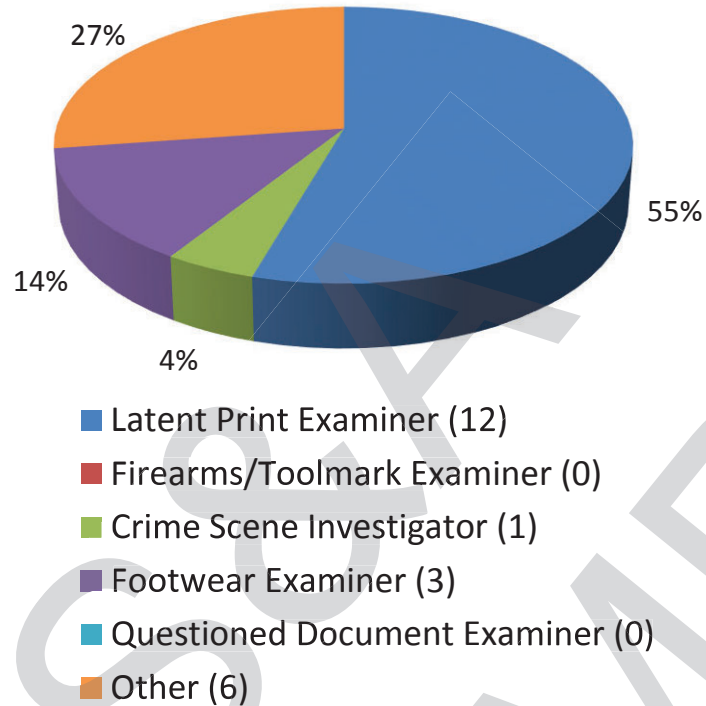


\*For further information, please read *Manufacturer's Additional Observations* on the final page of this report.

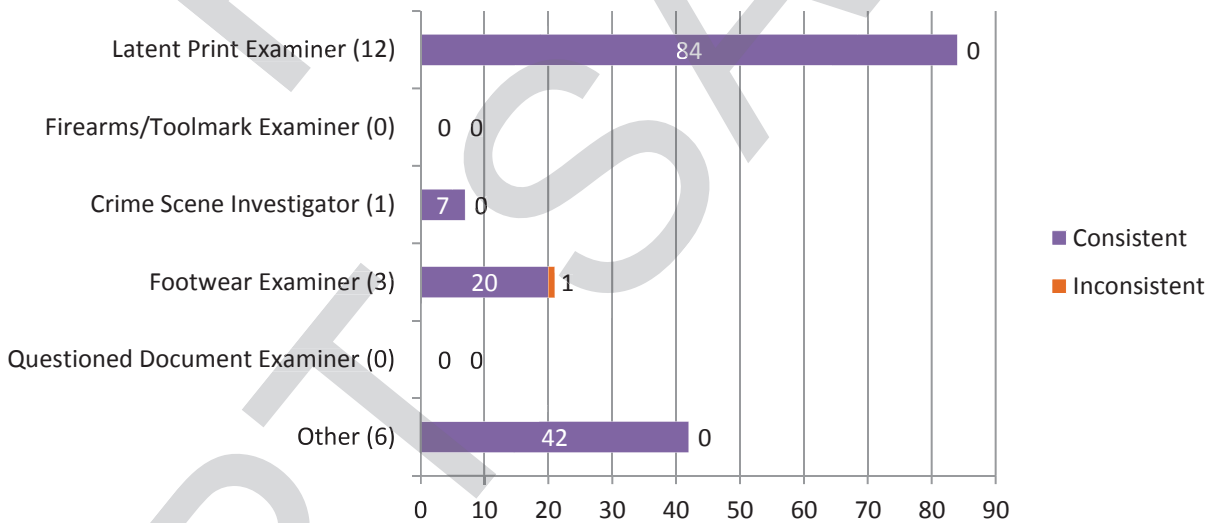


## Appendix 6

### Percentage of Participants Based on Primary Job Position



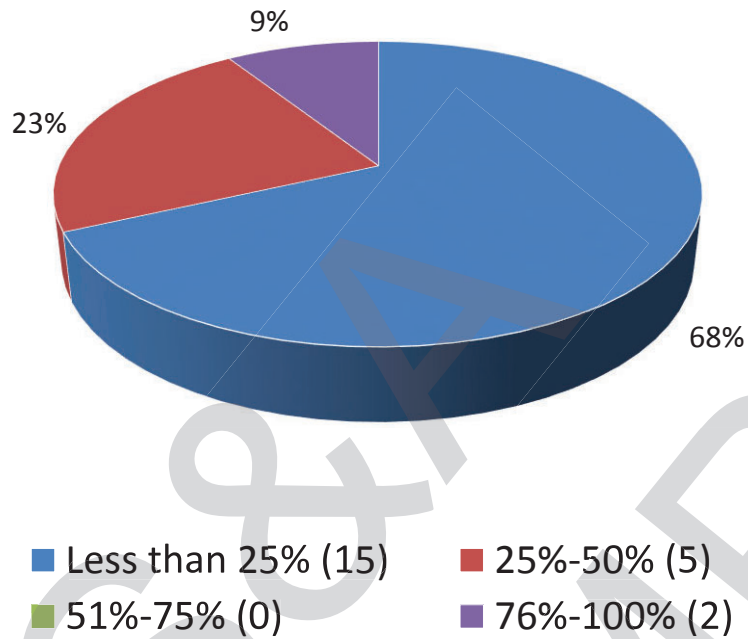
### Consistent vs Inconsistent Responses Based on Primary Job Position



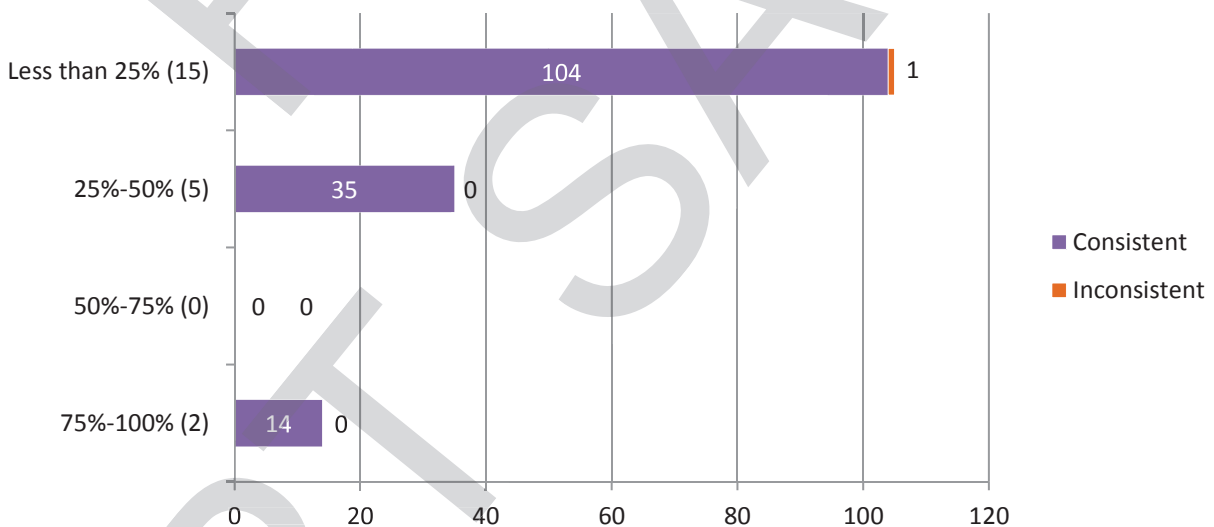
\*For further information, please read *Manufacturer's Additional Observations* on the final page of this report.

## Appendix 7

### Percentage of Participants Based on Time Devoted to Footwear Casework



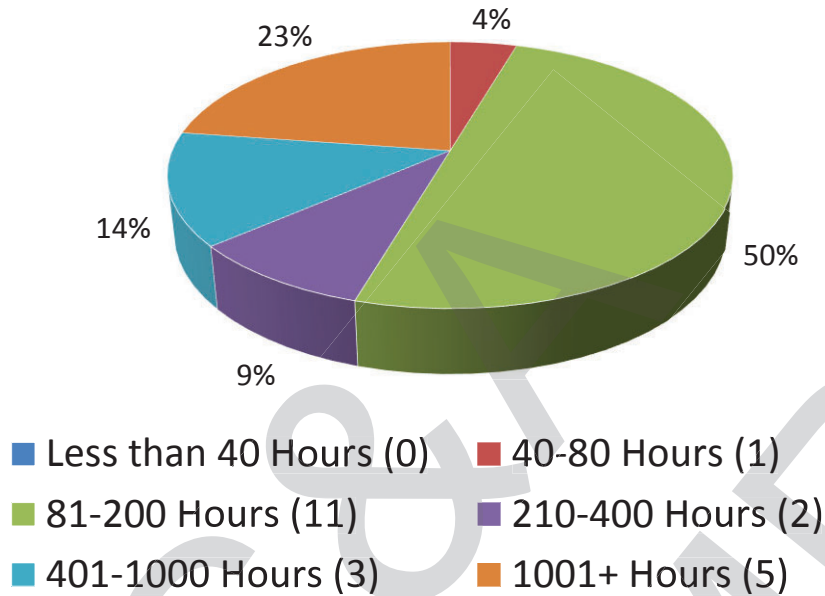
### Consistent vs Inconsistent Responses Based on Time Devoted to Footwear Casework



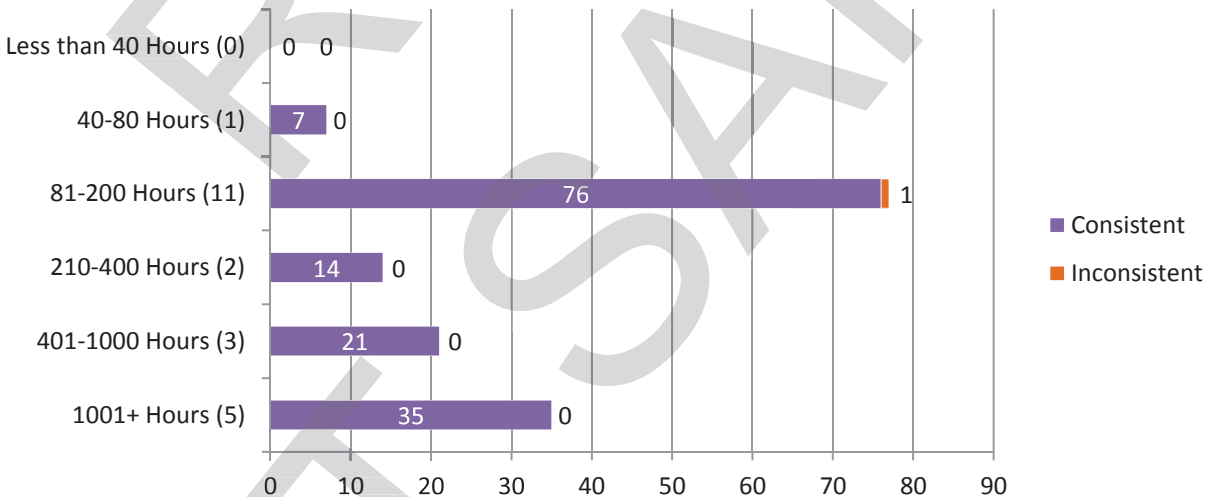
\*For further information, please read *Manufacturer's Additional Observations* on the final page of this report.

## Appendix 8

### Percentage of Participants Based on Hours of Footwear Training Completed



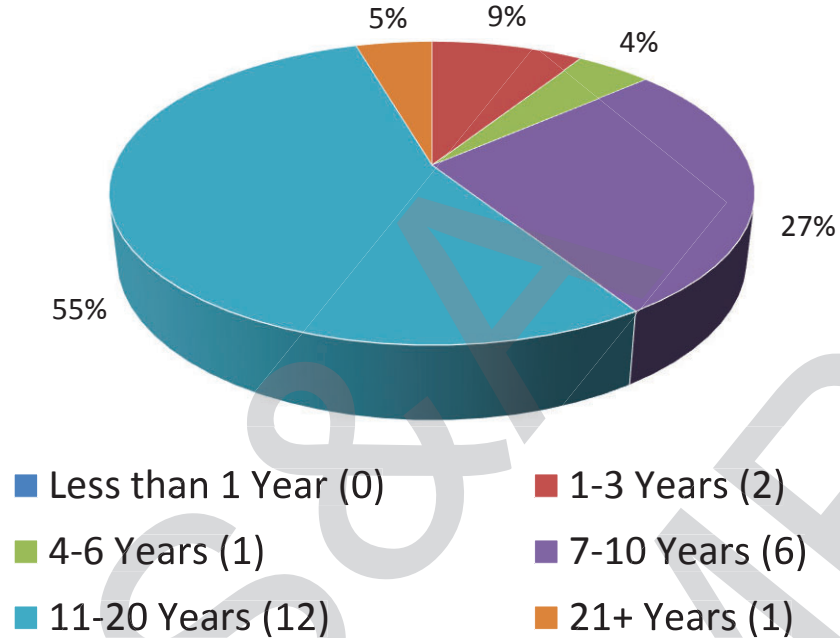
### Consistent vs Inconsistent Responses Based on Hours of Footwear Training Completed



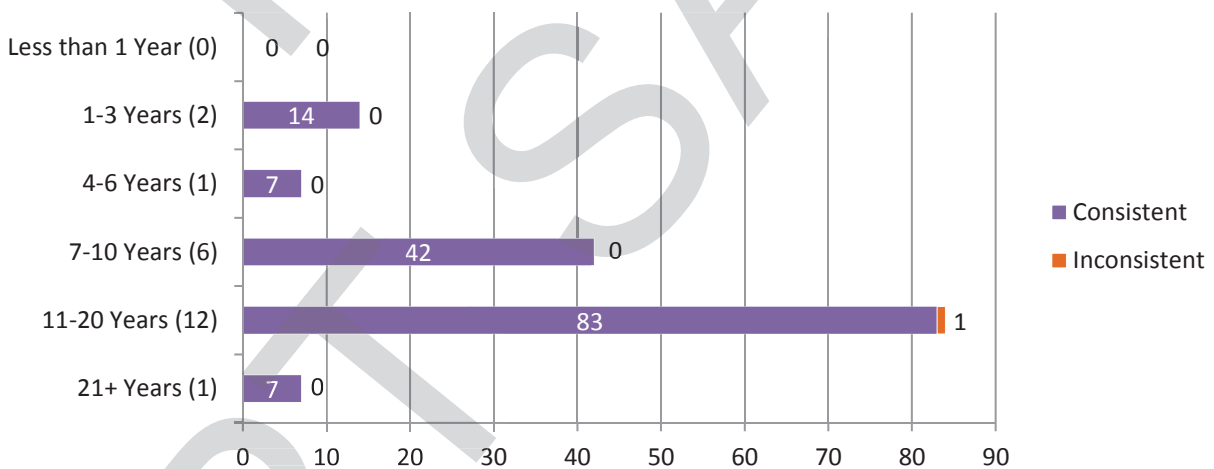
\*For further information, please read **Manufacturer's Additional Observations** on the final page of this report.

## Appendix 9

### Percentage of Participants Based on Years of Experience in Footwear Examinations



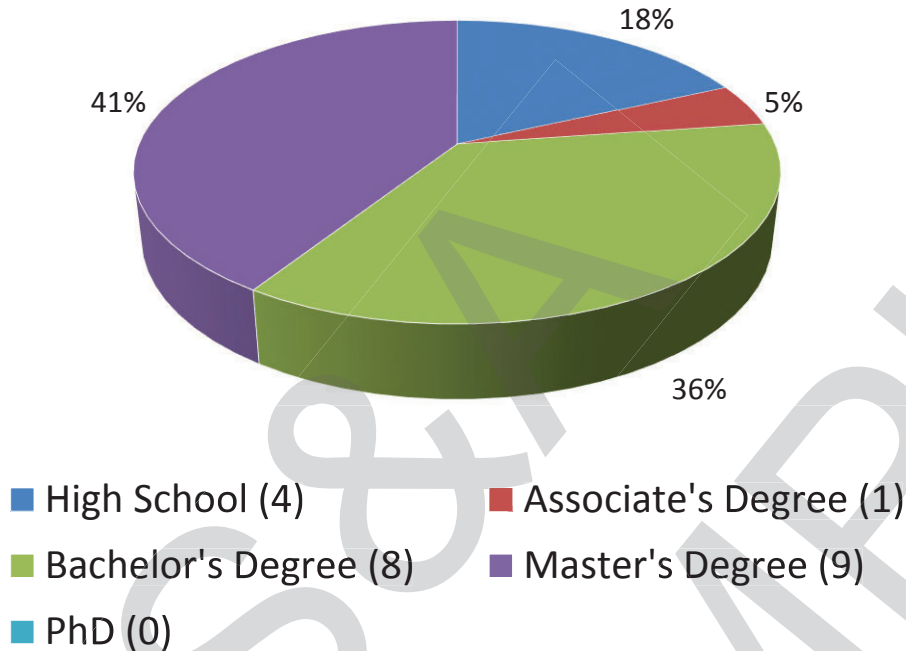
### Consistent vs Inconsistent Responses Based on Years of Experience in Footwear Examinations



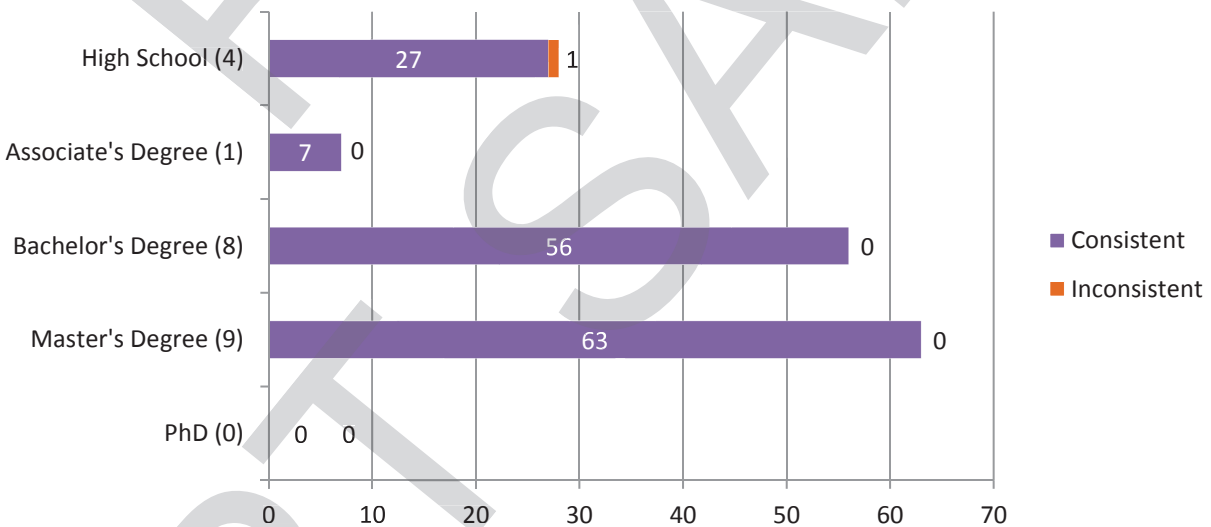
\*For further information, please read *Manufacturer's Additional Observations* on the final page of this report.

## Appendix 10

### Percentage of Participants Based on Highest Level of Education Completed



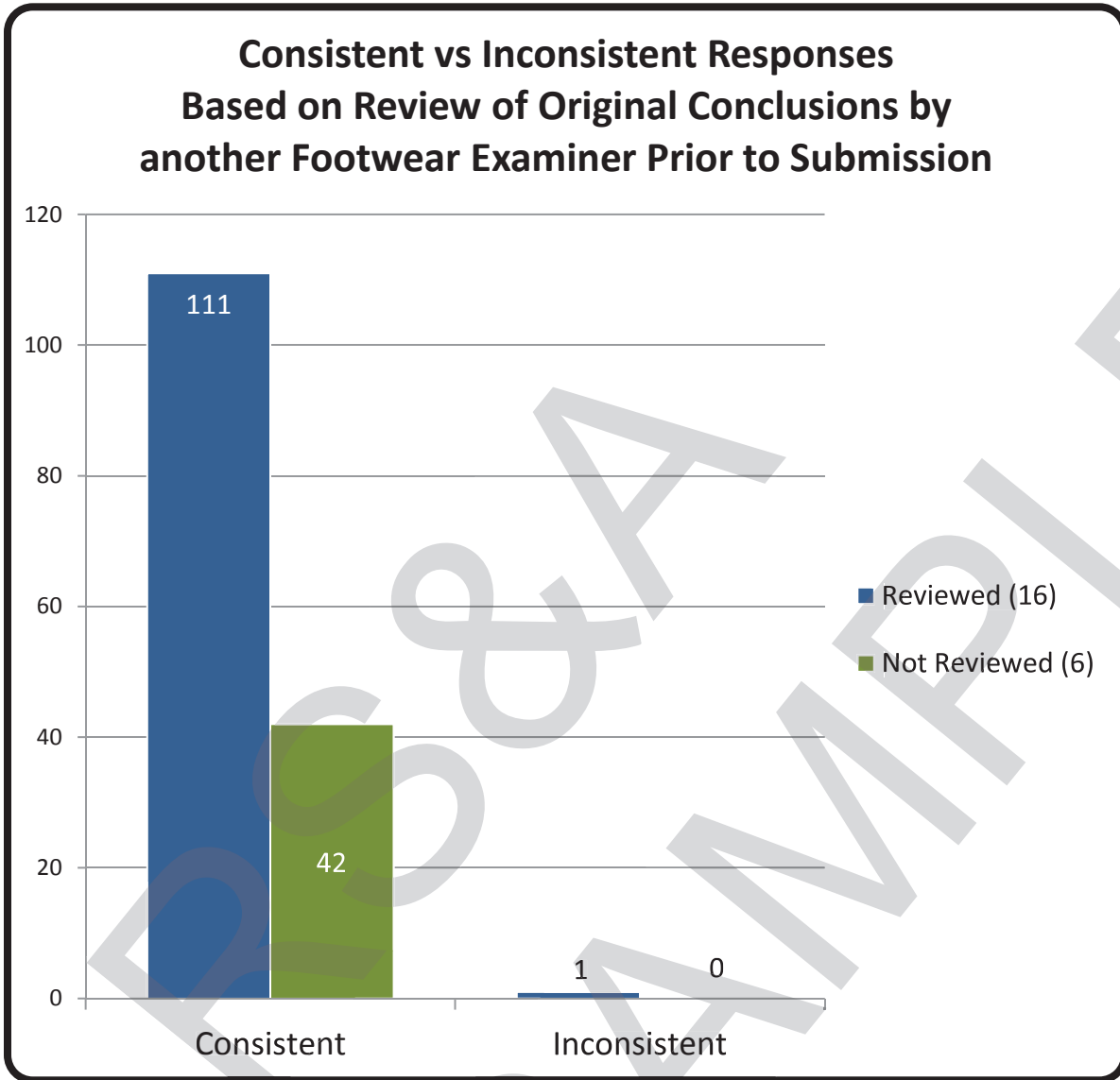
### Consistent vs Inconsistent Responses Based on Highest Level of Education Completed



\*For further information, please read *Manufacturer's Additional Observations* on the final page of this report.



## Appendix 11



\*For further information, please read *Manufacturer's Additional Observations* on the final page of this report.

## Appendix 12

### Participant Responses Listed by Test Code

Questioned Impression #		Q-1	Q-2	Q-3	Q-4	Q-5	Q-6	Q-7
Assigned Values		ID K-4	ID K-3	EXC	EXC	EXC	ID K-2	ID K-2
<b>Test Code</b>	XXXXXXXXXX	ID K-4	ID K-3	EXC	EXC	EXC	ID K-2	ID K-2
	XXXXXXXXXX	ID K-4	ID K-3	EXC	EXC	EXC	ID K-2	ID K-2
	XXXXXXXXXX	ID K-4	ID K-3	EXC	EXC	EXC	ID K-2	ID K-2
	XXXXXXXXXX	ID K-4	ID K-3	EXC	EXC	EXC	ID K-2	ID K-2
	XXXXXXXXXX	ID K-4	ID K-3	EXC	EXC	EXC	ID K-2	ID K-2
	XXXXXXXXXX	ID K-4	ID K-3	EXC	EXC	EXC	ID K-2	ID K-2
	XXXXXXXXXX	ID K-4	ID K-3	EXC	EXC	EXC	ID K-2	ID K-2
	XXXXXXXXXX	ID K-4	ID K-3	EXC	EXC	EXC	ID K-2	ID K-2
	XXXXXXXXXX	ID K-4	ID K-3	EXC	EXC	EXC	ID K-2	ID K-2
	XXXXXXXXXX	ID K-4	ID K-3	EXC	EXC	EXC	ID K-2	ID K-2
	XXXXXXXXXX	ID K-4	ID K-3	EXC	EXC	EXC	ID K-2	ID K-2
	XXXXXXXXXX	ID K-4	ID K-3	EXC	EXC	EXC	ID K-2	ID K-2

## Totals

Questioned Impression #	Q-1	Q-2	Q-3	Q-4	Q-5	Q-6	Q-7
<b>Assigned Values</b>	ID K-4	ID K-3	EXC	EXC	EXC	ID K-2	ID K-2
<b>Consistent Responses</b>	000	000	000	000	000	000	000
<b>Inconsistent Responses</b>	0	0	0	0	0	0	0
<b>Percentage of Consistent Responses</b>	100%	100%	100%	100%	100%	100%	100%

## Participant's Additional Comments

Test Code	Comments

## Manufacturer's Additional Observations

There were no additional observations.

**Authorized by:** Ron Smith, President

**For Further Information Contact:** Footwear Proficiency Test Coordinator